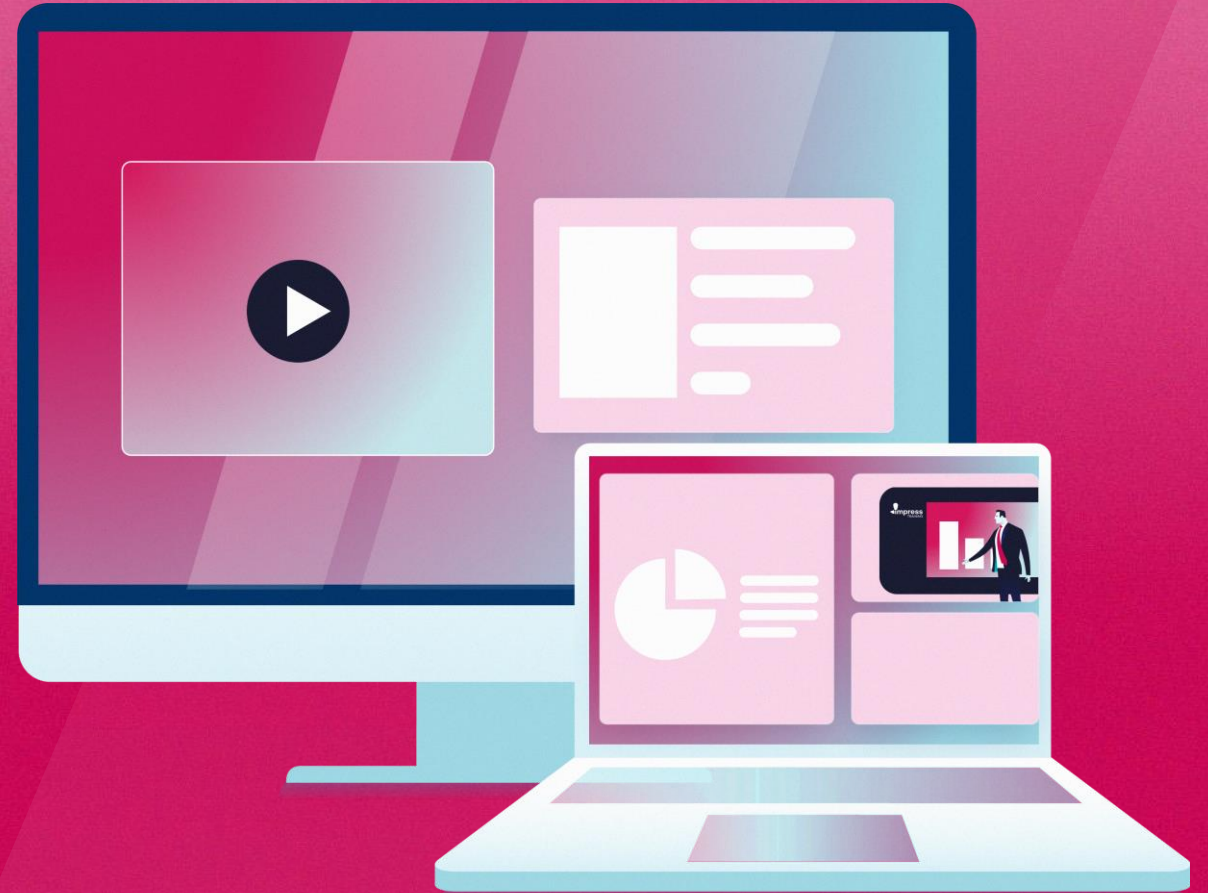




eGUIDE

# Joining an Online Course



# Joining an Online Course is simple...



## Step 1 Choose your course

Individuals or Organisations would **directly purchase** through Impress Training website.

\*For In-house, contact us directly.



## Step 2 Register & Sign-in

Learners receive a **Single-sign-on** to access our Impress Training Platform.



## Step 3 Start Course

That's it! Now you have **1 year (365 days)** to complete the course.

# What are the key features of our online platform?



## Rich Learning Environment

Experience a platform designed for learners with clear student progress indicators, unlimited replays of course material, and flexible Video playback control features and rich multimedia content.



## Any Place, at any Pace

Being online, this naturally means learners can schedule their own time and place to take their course.



## Easy Course Navigation

Our clear curriculum-forward navigation supports learner progress through individual chapters and lessons.



## Resume On Any Device

Participants resume learning — exactly where they left off — on any device, including mobile, tablet, laptop, or desktop.



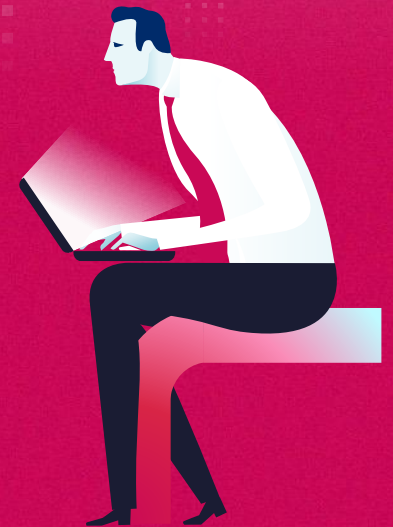
## Optimized For All Devices

A fully responsive site designed for learning on any device, including mobile, tablet, desktop and laptop



## Choose your site language

Go global. Learners can change the site to the language of their choice with a single click.

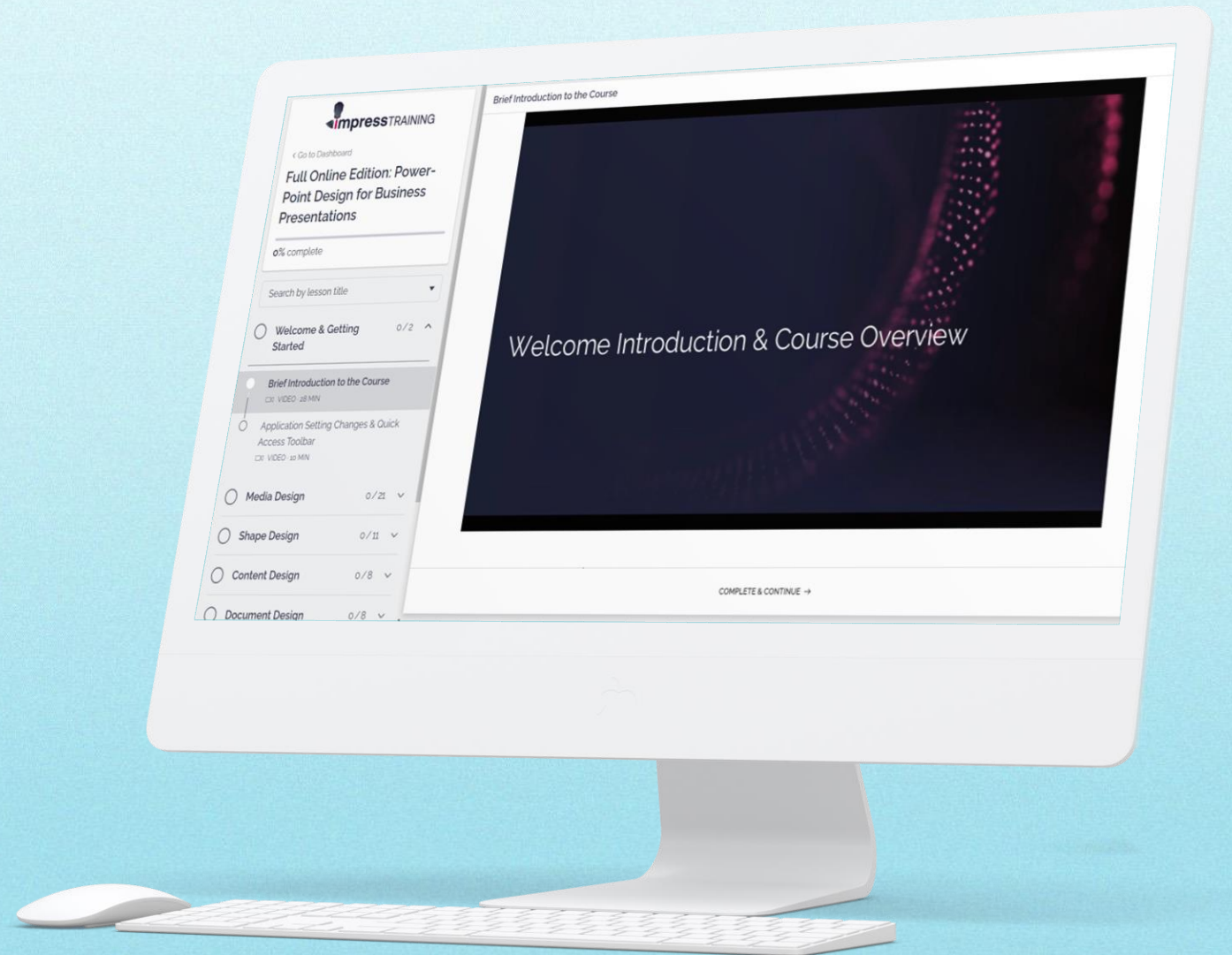




# What would the platform and course look like?

## Courses uniquely curated by Impress Training Instructors

All our courses are written and produced at Impress Training by the instructors that created them.



# Frequently Asked Questions about Virtual Courses.

## **How long will I be able to access the courses for?**

When payment is made, you will have 1 year (365 days) in which to access and complete the course.

## **Will there be any Instructor interaction?**

No. These courses are designed to be completely self-contained and self-directed.

## **Can I download the videos for offline viewing?**

No. You must be on the platform connected to the internet to view Video content. Other types of materials may be available for download.

## **Will I receive a Certificate?**

Yes, you will receive a e-certificate upon 100% completion of the course.

## **Are there any technical requirements or downloads needed?**

No. As long you have good internet connection and an internet browser – you're ready to go.

## **Can I get a refund?**

No. So please ensure you read through the terms and conditions clearly. And make sure before you buy that these are the right courses for your needs.

## **Can our Organisation enrol batches of People to enrol?**

Yes, for more information on the process and pricing you can contact Impress Training directly at [mail@impresstraining.com](mailto:mail@impresstraining.com)





**We look forward to hearing from you.**

**Impress Training Pte Ltd.**

8 Burn Road,  
#04-11/12, Trivex,  
Singapore 369977

T. (+65) 6636 9772

M. (+65) 9850 9058

E. [mail@impresstraining.com](mailto:mail@impresstraining.com)

W. [impresstraining.com](http://impresstraining.com)